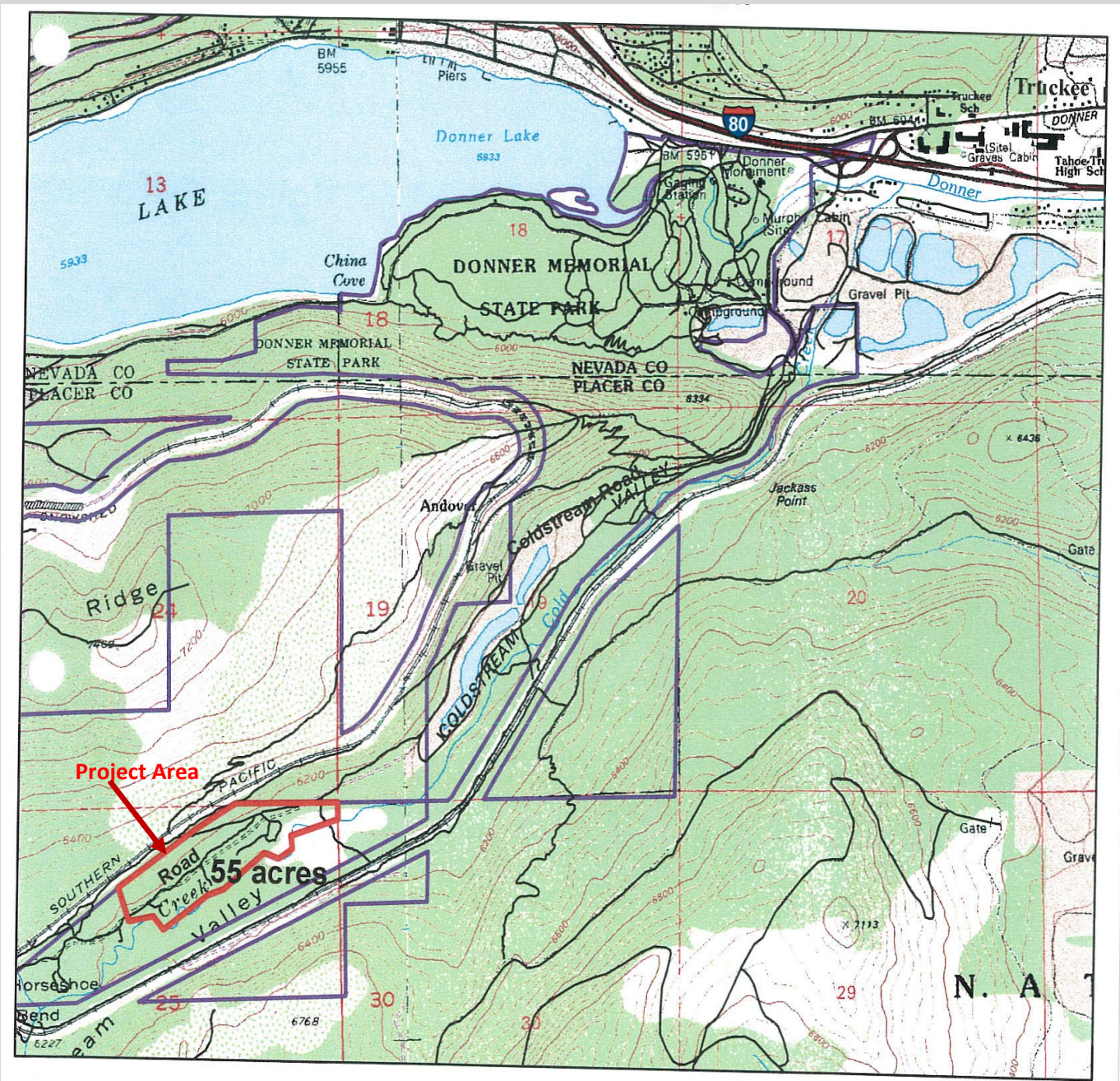


Coldstream Canyon Materials Location – General location of 50 logs with rootwads provided by TRWC.



Coldstream Canyon, Donner Memorial State Park is located about 2 miles southwest of Truckee, CA and about 1.5 miles south of Donner Lake. Vehicle access for crews and equipment to the project site will be along existing roads, with primary access along Coldstream Canyon Road. Coldstream Canyon Road is a dirt roadway utilized by State Parks personnel, local residents and visitors to the area. The road narrows at times, and minimal brush removal may be needed to ensure adequate equipment access.

Access: The project site is located behind a State Parks gate that is often locked. Contractors wishing to access the site prior to submitting a bid should contact Michele Prestowitz at: 530-550-8760 x 4 or mprestowitz@truckeeriverwc.org