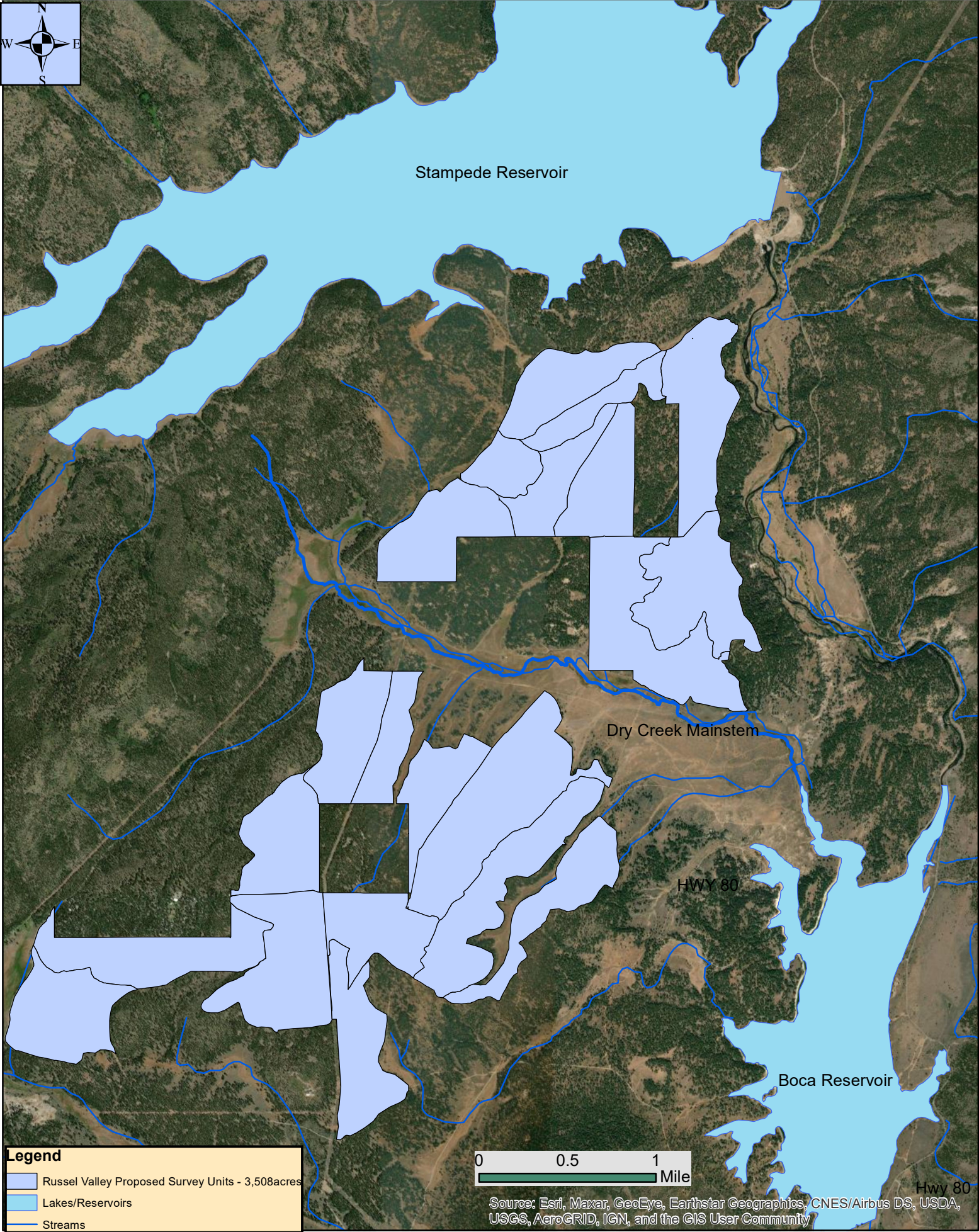


Russell Valley - Proposed Project Location



Legend

- Russel Valley Proposed Survey Units - 3,508acres
- Lakes/Reservoirs
- Streams



Source: Esri, Maxar, GeoEye, Earthstar Geographics, CNES/Airbus DS, USDA, USGS, AeroGRID, IGN, and the GIS User Community

HWY 80

Russell Valley Project - Archeological Coverage

