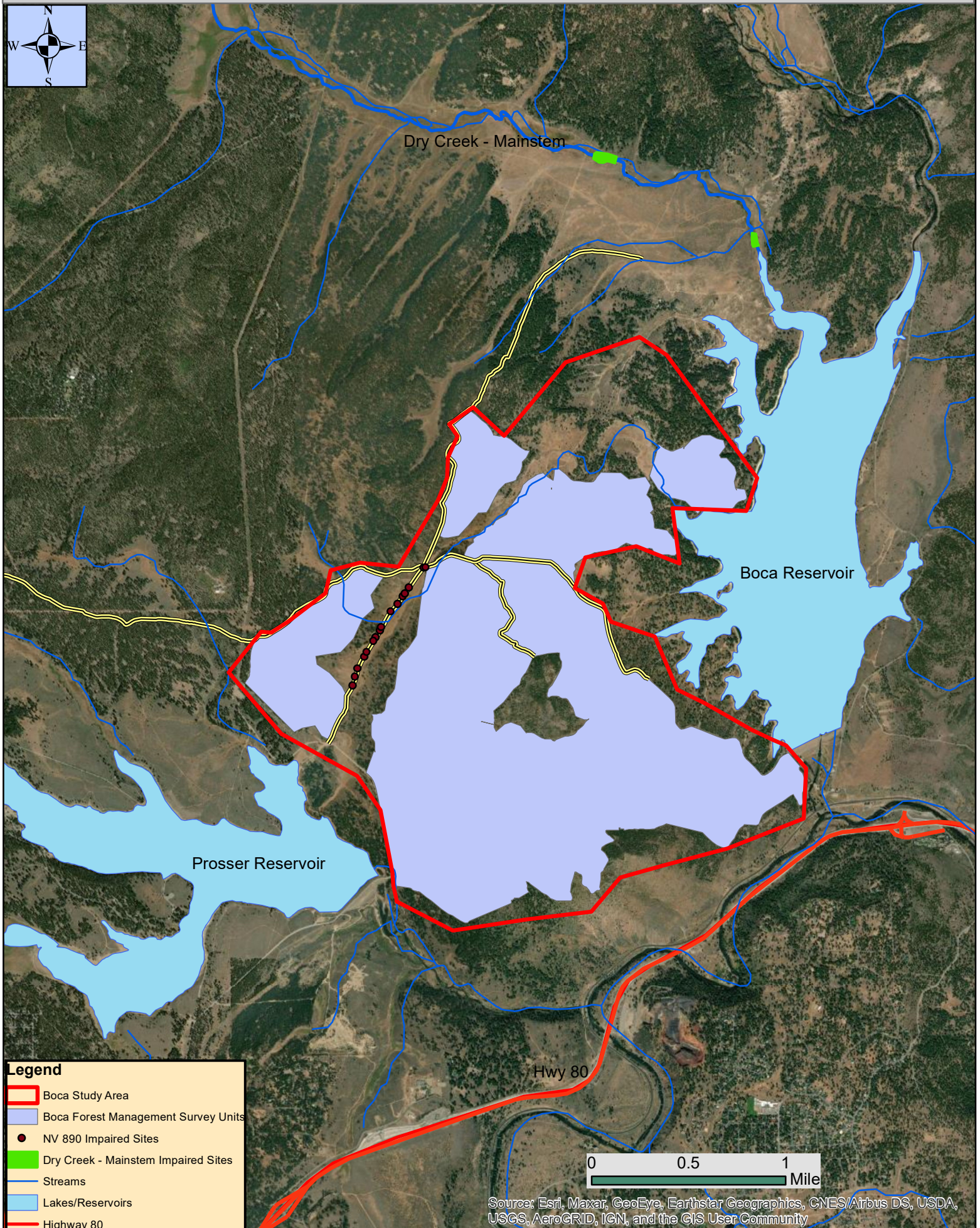
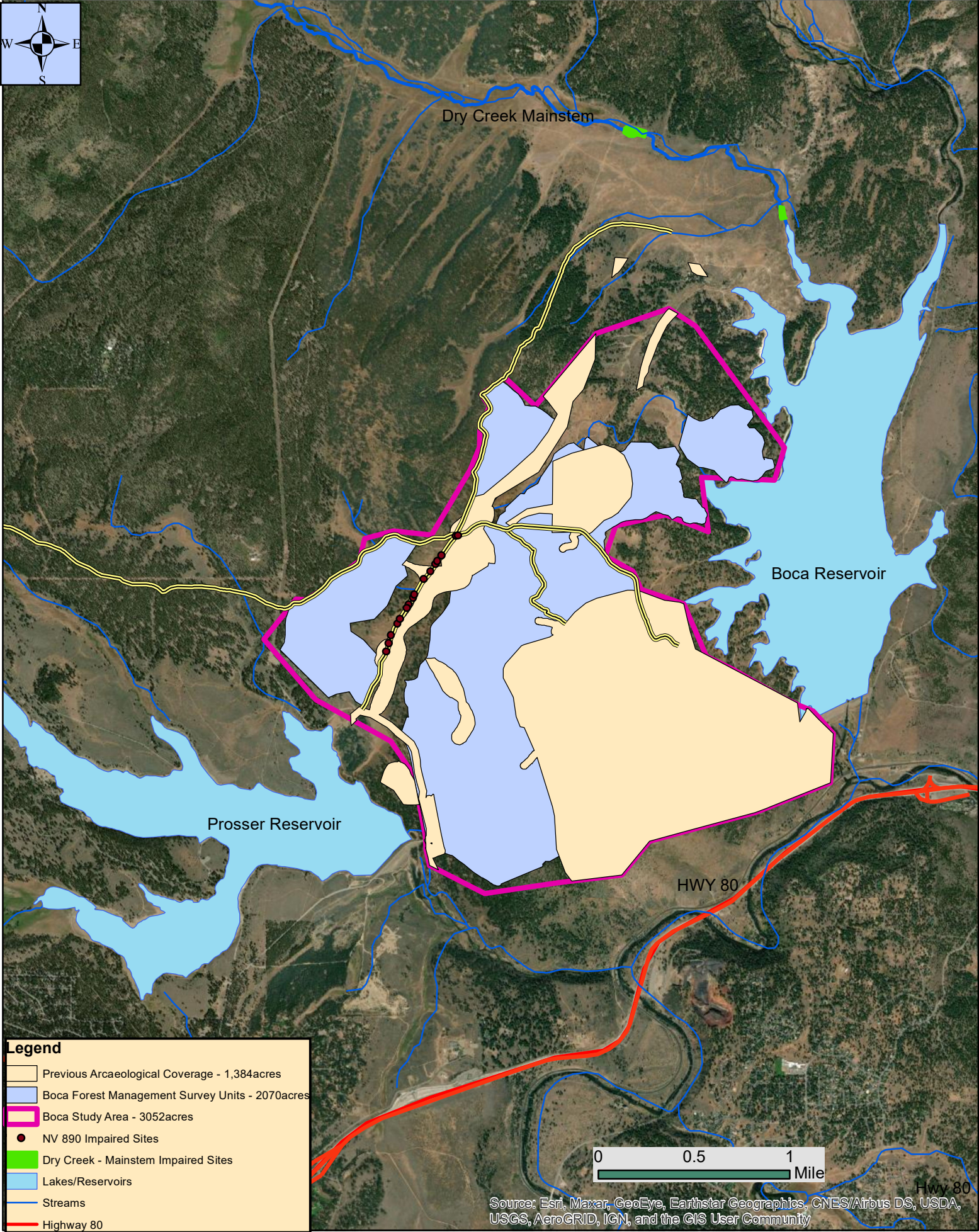


# Boca Forest Health and Meadow Habitat - Project Location





# Boca Forest Health and Meadow Habitat - Archeological Coverage





Forest Service	Site Type	Site Name	Description	Last Visited	NRHP Status	Management Recommendations
05175700010	Historic	OVERLAND EMIGRANT TRAIL, TRUCKEE ROUTE	The route is located on the Truckee RD, American River RD, and Yuba River RD. CES 12/1/2022. Shapefiles added this date are digitized (2005) and buffered (ov 6 feet) lines from OCTA machine in 1989 and again in 2000 per attribute table. 	2019	Eligible	Various Alignments need to be verified for presence or Absence
05175700067	Multicomponent	BOCA BLUFF SITE	This multicomponent site lies primarily on the top of a hill at the edge of Boca Reservoir. The prehistoric component, densest on the crest of the hill, is dominated by basalt primary and secondary reduction flakes. Basalt tool fragments were noted in it	1999	Unevaluated	Full Site Record Update; Evaluate Historic Component
05175700068	Historic	OET NHT ALIGNMENT	This is the alignment of the OET National Historic Trail as defined by NPS. 	Unknown	Eligible	Various Alignments need to be verified for presence or Absence
05175700087	Historic	H.S. #3-NOT ELIGIBLE	1975. Site record is very confusing (CES 7/26/2019). Map shows two site areas bisected by a drainage. Section 12 of the site record has the site described as a loess scatter in the ecotonal zone between the creek and site or	2007	Not Eligible	No action necessary/ Not Eligible
05175700179	BOCA CCC CAMP		2009: According to the CCC Legacy website, the camp was occupied in 1940 and 1941. The camp is listed as BR 92, Company 3206. After the 1977 Fireweed Fire and as part of the original 1977 site recording. Paul Wilford photographed an engraving in concrete	2015	Unevaluated	Site record Update/Monitoring record
05175700194			NO DESCRIPTION WAS PRESENT.	1991	Unevaluated	Full Site Record Update
5175700195	ANNIE MCCLOUD PREHISTORIC 2		Five basalt flakes observed in 1991. ACT is still posted as of 7/7/2011.	1991	Unevaluated	Full Site Record Update
05175700312	NOT ELIGIBLE		This site is a small, discrete scatter of basalt and obsidian flakes situated on a sagebrush covered slope above a seasonal stream drainage.		Not Eligible	No action necessary/ Not Eligible
05175700399	Precontact	NOT ELIGIBLE	A diffuse lithic scatter primarily of basalt.	2002	Not Eligible	No action necessary/ Not Eligible
05175700505	Precontact		The site consists of a sparse flake scatter, a basalt site-notched PP, 2 fine-grain basalt cores, and lithics.	2001	Unevaluated	Full Site Record Update
05175700506			The site consists of 2 discrete concentrations of basalt flakes, a basalt biface	1998	Unevaluated	Full Site Record
05175700510	Precontact	SEE SHORTY RUN	This prehistoric site is located on a terrace on the south side of an intermittent drainage.	1992	Unevaluated	Full Site Record Update
05175700511	Precontact	SPACE THE FINAL	This prehistoric site is a lithic scatter located at the Northern toeslope of the Boca Hill	1997	Unevaluated	Full Site Record Update
05175700514	Precontact	BRITS, BLONDES, BULLETS, AND BUGS	Lithic scatter	2002	Unevaluated	Full Site Record Update
5175700555	Precontact		This large prehistoric site, located on a sagebrush-covered terrace at the edge of Russell Valley	2005	Unevaluated	Full Site Record Update
05175700657	Multicomponent		Basalt Lithic Scatter and Historic Occupation area	1998	Unevaluated	Full Site Record Update/ Evaluate Historic Component
05175700658	Precontact		P3a. Description: This prehistoric site consists of a moderately sparse lithic scatter composed primarily of basalt. It is situated on a low sloping terrace directly adjacent to a large ephemeral drainage to the east and intermittent drainage to the north	1998	Unevaluated	Full Site Record Update
05175700660	Precontact		This prehistoric site consists of a sparse lithic scatter composed of basalt. It is situated on a toe slope directly adjacent to a large intermittent drainage. 	1998	Unevaluated	Full Site Record Update
05175700685	Precontact	ROY'S RING OFFLAKES	NO DESCRIPTION WAS PRESENT.	2000	Unevaluated	Full Site Record Update
05175700690	Historic	DEBBY'S ALIEN ENCOUNTER	CES 04/17/2020-spatial needs field recording. Dot created from hardcopy 2002 SR Charcoal mound site-This site consists of a 6.5m x 57 m raised earthen mound with about seven 3 to 4m iron box (partially buried) laid side by side. There are also a	2002	Unevaluated	Full Site Record Update; Evaluate Site
05175700738	Multicomponent	BASALT KNOLL	basalt lithic scatter and a portion of the Truckee Route of the Overland Emigrant Trail	2007	Unevaluated	Full Site Record Update; Verify Presence of OET
05175700740	Precontact	FW-2-NOT ELIGIBLE	Scarse basalt flaked stone scatter with 3 fragments of groundstone.	2014	Not Eligible	No action necessary/ Not Eligible
05175700741	Precontact	FW-3-NOT ELIGIBLE	Lance linear lithic scatter with ground stone.	2014	Not Eligible	No action necessary/ Not Eligible
05175700742	Precontact	FW-4-NOT ELIGIBLE	Scarse lithic scatter	2014	Not Eligible	No action necessary/ Not Eligible
05175700743	Precontact	FW-5-NOT ELIGIBLE	Scarse lithic scatter	2014	Not Eligible	No action necessary/ Not Eligible
05175700752			Refuse dump of cans, glass, whitewear, and metal objects.	2014	Unevaluated	Full Site Record Update/ Evaluate site
05175700834	WHITE RIM		LITHIC SCATTER	2014	Unevaluated	Full Site Record Update or Monitoring Form
05175700837	Boca Hobart Mill Road-NOT ELIGIBLE		ROAD	2015	Not Eligible	No action necessary/ Not Eligible
05175700839	CCC Camp Boca Dam Road-NOT ELIGIBLE		ROAD	2015	Not Eligible	No action necessary/ Not Eligible
05175700882	BOCA CCC EXTENSION		This is a recording of FS Site 05175700178, Loca 1. This is a historic site consisting of several flakes, rock alignments, and historic artifact concentrations. The site is located on a terrace created by a borrow pit for Boca Dam. The site features	2009	Unevaluated	Full Site Record Update/ Evaluate site
05175700943			FS Site 05175700943 consists of a circa 1940s and later area refuse scatter dispersed in and around a large borrow pit associated with the construction of the Boca Reservoir Dam (1937-1939). The site is situated in an area wooded primarily with sparses J	2018	Unevaluated	Assess condition/ Monitoring Record
05175700947	Truckee Storage Project-NOT ELIGIBLE		xxx	2015	Not Eligible	No action necessary/ Not Eligible
05175700965	BC-S1		This resource consists of a small lithic scatter with at least 11 basalt flakes and a significant amount of basalt shatter flakes (number undetermined). This site was located during field efforts for the Boca Complex Restoration Project, a joint effort of the Tah	2020	Unevaluated	Assess Condition/ Monitoring Record
05175700966	BD-S2		This resource consists of a small lithic scatter with at least 5 pieces of shatter, a Chert flake tool, and at least 5 pieces of basalt flakes. This site was located during field efforts for the Boca Complex Restoration Project, a joint effort of the Tah	2020	Unevaluated	Assess Condition/ Monitoring Record
05175700967	BC-S3		This resource consists of a projectile point, possibly a Martis contracting-stem, one basalt primary flake and one basalt biface thinning flake. The site was located during field efforts for the Boca Complex Restoration Project, a joint effort of the Tah	2020	Unevaluated	Assess Condition/ Monitoring Record
05175700968	BC-S4		This resource consists of small lithic scatter, located during field efforts for the Boca Complex Restoration Project, a joint effort of the Tahoe National Forest (TNF) and the Truckee River Watershed Council (TRWC). Due to project scope constraints in o	2020	Unevaluated	Assess Condition/ Monitoring Record
05175700969	BC-S5		This resource consists of 5+ basalt flakes located during field efforts for the Boca Complex Restoration Project, a joint effort of the Tahoe National Forest (TNF) and the Truckee River Watershed Council. Due to project scope constraints in proportion to	2020	Unevaluated	Assess Condition/ Monitoring Record
05175700970	BC-S6		This resource consists of 3+ basalt flakes. This resource was located during field efforts for the Boca Complex Restoration Project, a joint effort of the Tahoe National Forest (TNF) and the Truckee River Watershed Council (TRWC). Due to project scope co	2020	Unevaluated	Assess Condition/ Monitoring Record
05175700972	BC-S8		This resource consists of a small lithic scatter with 1 chert core, 1 chert flake, and 12 basalt flakes. The site was located during field efforts for the Boca Complex Restoration Project, a joint effort of the Tahoe National Forest (TNF) and the Truckee	2020	Unevaluated	Assess Condition/ Monitoring Record
05175700973	BC-S12		This resource consists of basalt 6+ basalt flakes, 1 historic "hercules" beer can, and 1 undetermined projectile point. This resource was located during field efforts for the Boca Complex Restoration Project, a joint effort of the Tahoe National Fore	2020	Unevaluated	Assess Condition/ Monitoring Record
05175700974	BC-S10		This resource consists of a large lithic scatter of basalt and chert flakes with 1 unidentified projectile point shoulder fragment (basalt), and two Martis stemmed points. This site was located during field efforts for the Boca Complex Restoration Project	2020	Unevaluated	Assess Condition/ Monitoring Record
05175700975	BC-S11		This resource consists of a basalt core, a chert flake, and an obsidian flake. The site was located during field efforts for the Boca Complex Restoration Project, a joint effort of the Tahoe National Forest (TNF) and the Truckee River Watershed Council (	2020	Unevaluated	Assess Condition/ Monitoring Record
05175700999	Historic	Graydon OET Alignments	Chuck Graydon mapping of the OET in cooperation with the TNF. First book published in 1986, second edition 1988, and third edition 1994. GIS data based on digitizing by GIS employee in 2005. No site record.	Unknown	Unevaluated	Various Alignments need to be verified for presence or Absence
05175751000	Historic	Chris Way OET Alignments	xx	Unknown	Unevaluated	Various Alignments need to be verified for presence or Absence