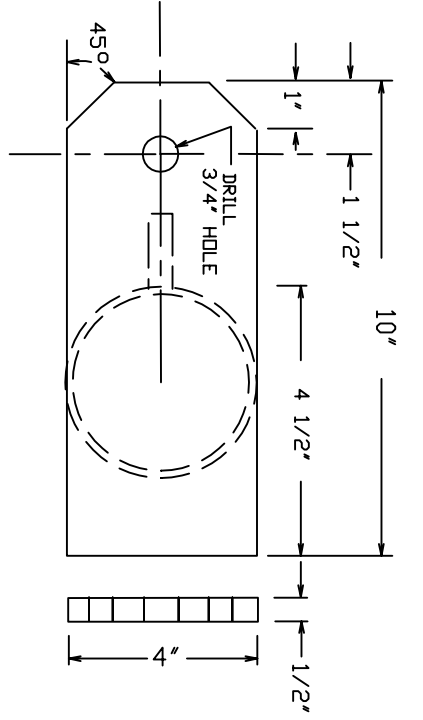
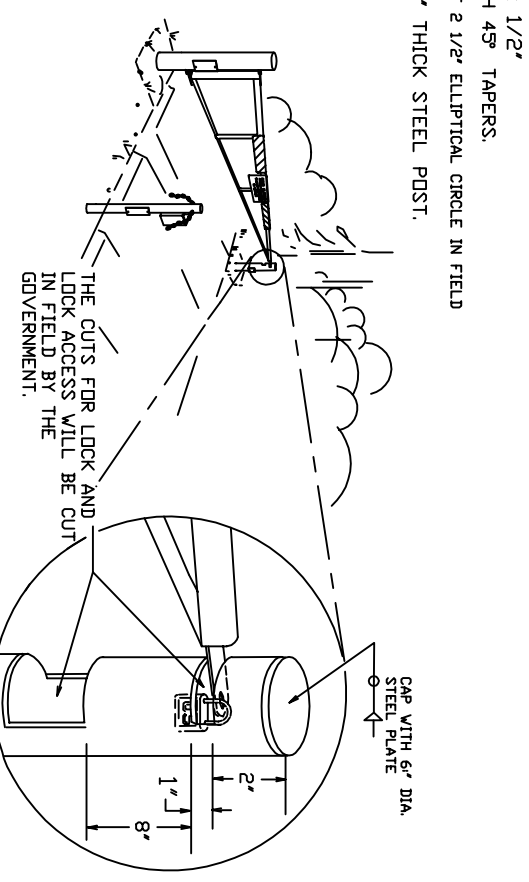
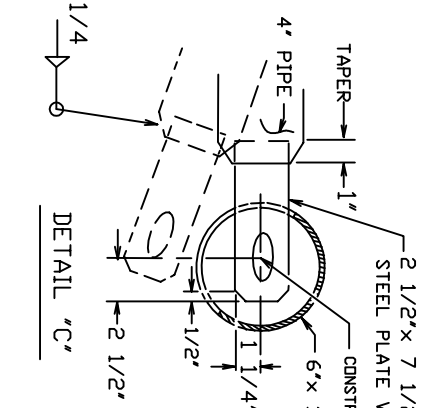


6" STEEL POST GATE HINGE PLATE (4 EA.)
DETAIL 'A'



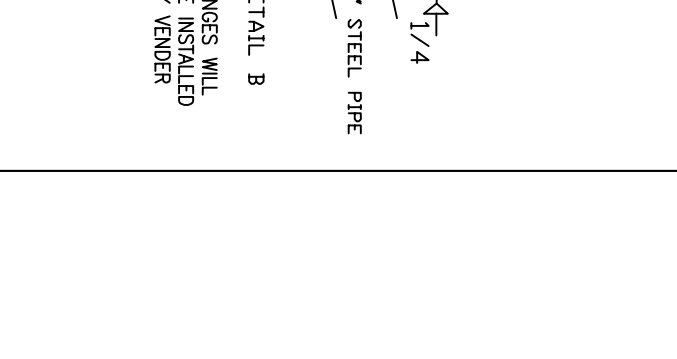
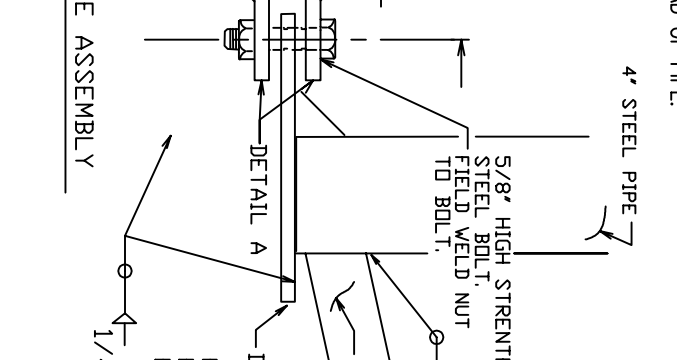
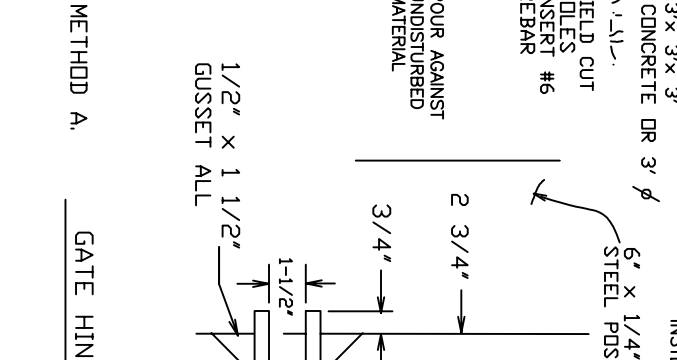
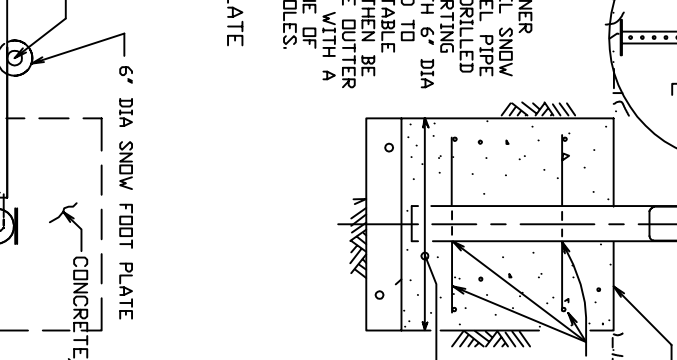
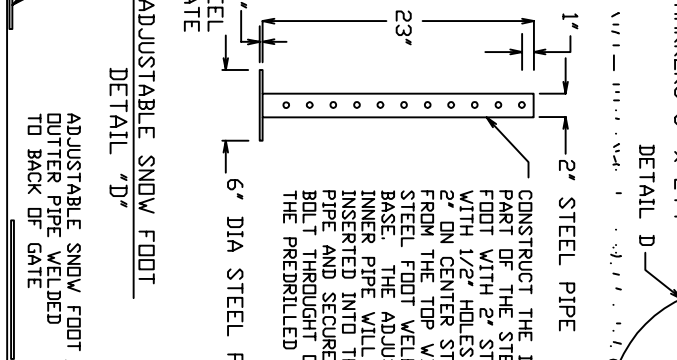
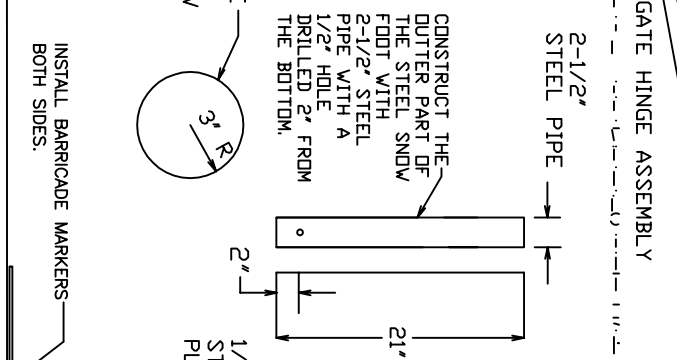
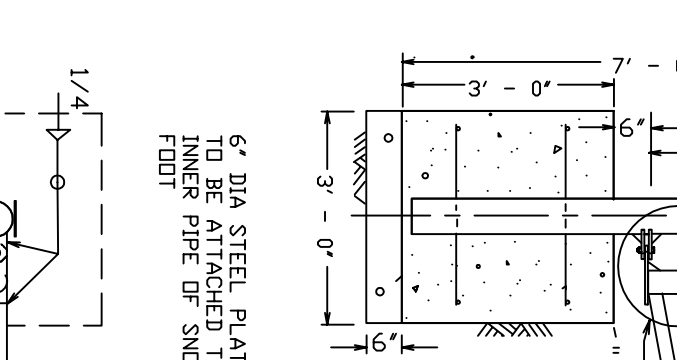
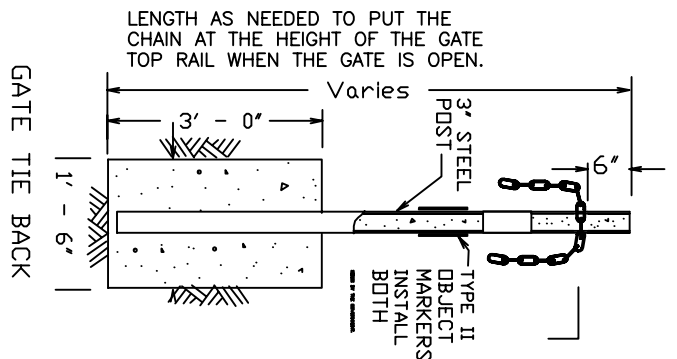
4" STEEL PIPE TOP/BOTTOM GATE HINGE PLATE (2 EA.)
DETAIL 'B'



PERSPECTIVE VIEW

NOTES:

1. GATE, GATE POSTS AND ADJACENT WELDED MEMBERS, TO BE PAINTED WITH ONE COAT OF FOREST GREEN PAINT MEETING SPECIFICATION SECTION 708.
2. ALL WELDS SHALL BE 1/4 INCH.
3. TYPE III BARRICADE MARKER, 12" x 36" AND CLOSED SIGN WITH INSERT CAPABILITY 30" x 15" WHEN SPECIFIED BY THE ENGINEER SHALL BE USED AND INSTALLED BY THE GOVERNMENT.
4. STRUCTURAL TUBE OF EQUAL STRENGTH MAY BE USED INSTEAD OF PIPE.



LENGTH AS NEEDED TO PUT THE CHAIN AT THE HEIGHT OF THE GATE TOP RAIL WHEN THE GATE IS OPEN.

Varies

3" STEEL POST

TYPE II OBJECT MARKERS INSTALL BOTH

1' - 6"

GATE TIE BACK

CONSTRUCT THE OUTER PART OF THE STEEL SNOW FOOT WITH 2-1/2" STEEL PIPE WITH A 1/2" HOLE DRILLED 2" FROM THE BOTTOM.

2-1/2" STEEL PIPE

21'

23'

1/4" DIA STEEL PIPE

ADJUSTABLE SNOW FOOT

DETAIL 'D'

CONSTRUCT THE INNER PART OF THE STEEL SNOW FOOT WITH 2" STEEL PIPE WITH 1/2" HOLES DRILLED 2" ON CENTER STARTING FROM THE TOP WITH 6" DIA STEEL FOOT WELDED TO BASE. THE ADJUSTABLE INNER PIPE WILL THEN BE INSERTED INTO THE OUTER PIPE AND SECURED WITH A BOLT THROUGH ONE OF THE PREDRILLED HOLES.

2" STEEL PIPE

1'

1/4" DIA STEEL PIPE

ADJUSTABLE SNOW FOOT

DETAIL 'E'

CONSTRUCT THE SNOW FOOT WITH 2" STEEL PIPE WITH 1/2" HOLES DRILLED 2" ON CENTER STARTING FROM THE TOP WITH 6" DIA STEEL FOOT WELDED TO BASE. THE ADJUSTABLE INNER PIPE WILL THEN BE INSERTED INTO THE OUTER PIPE AND SECURED WITH A BOLT THROUGH ONE OF THE PREDRILLED HOLES.

2" STEEL PIPE

1'

1/4" DIA STEEL PIPE

ADJUSTABLE SNOW FOOT

DETAIL 'F'

CONSTRUCT THE SNOW FOOT WITH 2" STEEL PIPE WITH 1/2" HOLES DRILLED 2" ON CENTER STARTING FROM THE TOP WITH 6" DIA STEEL FOOT WELDED TO BASE. THE ADJUSTABLE INNER PIPE WILL THEN BE INSERTED INTO THE OUTER PIPE AND SECURED WITH A BOLT THROUGH ONE OF THE PREDRILLED HOLES.

2" STEEL PIPE

1'

1/4" DIA STEEL PIPE

ADJUSTABLE SNOW FOOT

DETAIL 'G'

CONSTRUCT THE SNOW FOOT WITH 2" STEEL PIPE WITH 1/2" HOLES DRILLED 2" ON CENTER STARTING FROM THE TOP WITH 6" DIA STEEL FOOT WELDED TO BASE. THE ADJUSTABLE INNER PIPE WILL THEN BE INSERTED INTO THE OUTER PIPE AND SECURED WITH A BOLT THROUGH ONE OF THE PREDRILLED HOLES.

2" STEEL PIPE

1'

1/4" DIA STEEL PIPE

ADJUSTABLE SNOW FOOT

DETAIL 'H'

CONSTRUCT THE SNOW FOOT WITH 2" STEEL PIPE WITH 1/2" HOLES DRILLED 2" ON CENTER STARTING FROM THE TOP WITH 6" DIA STEEL FOOT WELDED TO BASE. THE ADJUSTABLE INNER PIPE WILL THEN BE INSERTED INTO THE OUTER PIPE AND SECURED WITH A BOLT THROUGH ONE OF THE PREDRILLED HOLES.

2" STEEL PIPE

1'

1/4" DIA STEEL PIPE

ADJUSTABLE SNOW FOOT

DETAIL 'I'

CONSTRUCT THE SNOW FOOT WITH 2" STEEL PIPE WITH 1/2" HOLES DRILLED 2" ON CENTER STARTING FROM THE TOP WITH 6" DIA STEEL FOOT WELDED TO BASE. THE ADJUSTABLE INNER PIPE WILL THEN BE INSERTED INTO THE OUTER PIPE AND SECURED WITH A BOLT THROUGH ONE OF THE PREDRILLED HOLES.

2" STEEL PIPE

1'

1/4" DIA STEEL PIPE

ADJUSTABLE SNOW FOOT

DETAIL 'J'



SCALE IN FEET

0 1 2 3

INSTALL GATE STOPS ON BOTH SIDES WITH TYPE II OBJECT MARKERS.

ELEVATION & PLAN VIEWS

INSTALL BARRICADE MARKERS BOTH SIDES.

ADJUSTABLE SNOW FOOT TO BE ATTACHED TO INNER PIPE OF SNOW FOOT

ADJUSTABLE SNOW FOOT TO BACK OF GATE

CONCRETE, METHOD A.

SINGLE LANE GATE

DATE April 2012

STATE FOREST PROJECT

CALIF. TAHOE

SHEET NO.