

THE TRUCKEE MEADOWS RESTORATION

The area near the Truckee River Regional Park was once a large, vibrant wetland, replaced by roads, parking lots, and development. Yet pockets of wetlands remain, fragmented and disconnected. They are part of the over-looked watershed: we don't typically notice them, but they're important and they need our help.

Believing that nature and humanity can thrive together, the Truckee River Watershed Council formed a partnership to develop the Truckee Meadows Restoration Project.

After six years of planning, the first phase of construction was completed in the summer of 2017 on the wetland area north of Brockway Road. The result was more and better urban habitat for our birds and frogs, as well as less sediment entering the Truckee River.

For many, it has also made the invisible watershed...visible. A drive on Brockway Road now prompts the viewer to notice water flowing across a renewed wetland, promising to spring to life a once overlooked portion of our watershed.



Balance Hydrologics

PROTECT. ENHANCE. RESTORE.

We bring the community "Together for the Truckee" to protect, enhance and restore the Truckee River watershed.

One Goal. Multiple Parts.

Part Science: Addressing the site biology, geology and hydrology

Part Management: Aligning agencies, contractors and volunteers

Part Funding: From grants, foundations and individual donations

Part Education: Raising awareness for locals, visitors and water-users

READ MORE

about the Truckee Meadows Restoration Project at:
truckeerriverwc.org/restoring-invisible-watershed



foriver
TRUCKEE RIVER WATERSHED COUNCIL

530.550.8760 | info@truckeerriverwc.org

TRWC is a 501(c)3 non-profit organization

Photo by Teresa Garrison

Bringing Back

TRUCKEE'S WETLANDS: The Truckee Meadows Restoration Project



foriver
TRUCKEE RIVER WATERSHED COUNCIL

PROTECT.
ENHANCE.
RESTORE.



Top: After wetland restoration,
photo by Brenda Gilbert
Bottom: Before wetland restoration,
photo by Matt Freitas

THE TRUCKEE RIVER WATERSHED

The Truckee River watershed is more than our creeks and streams, meadows and ponds. It's part of all of us: the wildflowers and wildlife, birds and birders, fish and fishers, nature and nature-lovers.

Even if you live at the top of a mountain, you live in a watershed. It's a part of the planet where everything (fresh water, pollutants, sediment) drains towards a body of water – in our case, the Truckee River.

The Middle Truckee River Watershed is comprised of all the land, streams, rivers, and meadows from Tahoe Dam in Tahoe City to the California-Nevada state line. It is home to sugar pines, tiger lilies, and buttercups, as well as river otter, bobcat, Great Blue Heron, and Lahontan cutthroat trout.

Middle Truckee River Watershed



The Truckee Meadows Restoration Project

The Truckee Meadows Restoration Project is a partnership to reestablish and enhance historic wetlands.

PROJECT PARTNERS

- Tahoe-Truckee Sanitation Agency
- Town of Truckee
- Truckee Donner Land Trust
- Truckee Donner Public Utility District
- Truckee-Donner Recreation and Park District
- Truckee Sanitary District
- Truckee Tahoe Airport District

PROJECT FUNDERS

All partners provided funding and additional funding came from:

- Donors of the Truckee River Watershed Council
- California Department of Conservation
- California Department of Fish and Wildlife
- Community Foundation of Western Nevada - Truckee River Fund
- Lahontan Community Foundation
- National Fish and Wildlife Foundation
- Tahoe Truckee Community Foundation

foriver
TRUCKEE RIVER WATERSHED COUNCIL

WETLANDS RESTORED

PROBLEM: The meadow was fragmented and modified by urban development - it was crossed by roads, parking areas, ditches, and an irrigation pond. This resulted in a hydrologically altered meadow that provided poor habitat quality and contributed to erosion and sedimentation of the Truckee River.

RESTORATION ACTION: To restore hydrology and topography of the original wetland, we removed 7,000 cubic yards of fill, dispersed flows, and graded the sides of the pond.

RESULT: Water now spreads over the surface of the wetland that had long been dry. Habitat and ecological function are restored. Migratory birds visit the site. The pond continues to support golf course irrigation.

STREAM CHANNEL RECONNECTED

PROBLEM: Rapid runoff through the floodplain caused sediment to enter the Truckee River, degrading fish habitat and threatening their food source (bugs).

RESTORATION ACTION: In addition to removing a concrete-lined ditch, we restored the floodplain topography by planting native willows and dispersing and slowing the stream's flow across the floodplain, which allows sediment to drop out before reaching the Truckee River.

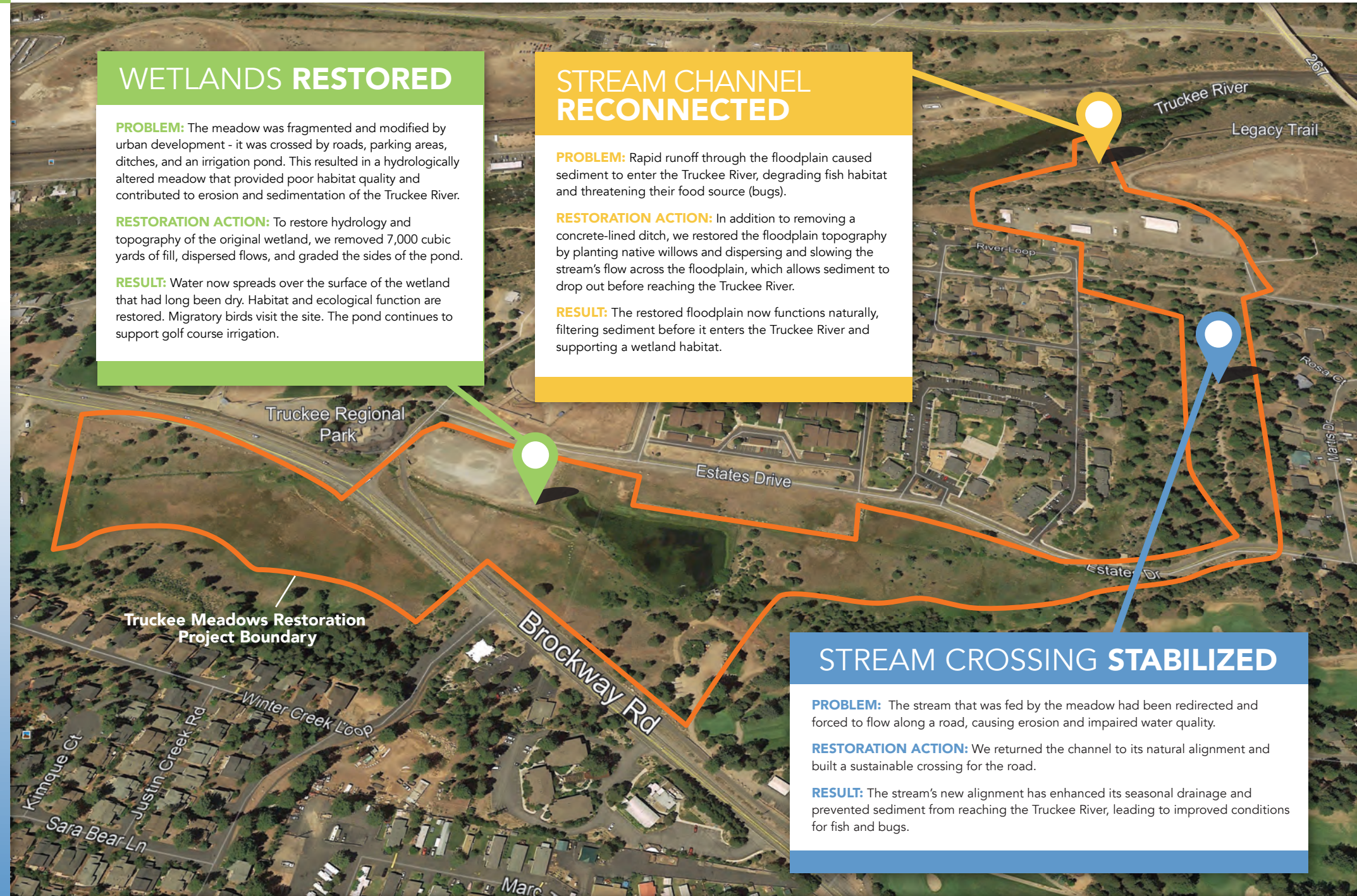
RESULT: The restored floodplain now functions naturally, filtering sediment before it enters the Truckee River and supporting a wetland habitat.

STREAM CROSSING STABILIZED

PROBLEM: The stream that was fed by the meadow had been redirected and forced to flow along a road, causing erosion and impaired water quality.

RESTORATION ACTION: We returned the channel to its natural alignment and built a sustainable crossing for the road.

RESULT: The stream's new alignment has enhanced its seasonal drainage and prevented sediment from reaching the Truckee River, leading to improved conditions for fish and bugs.



Main photo courtesy of Google Earth

truckeeriverwc.org